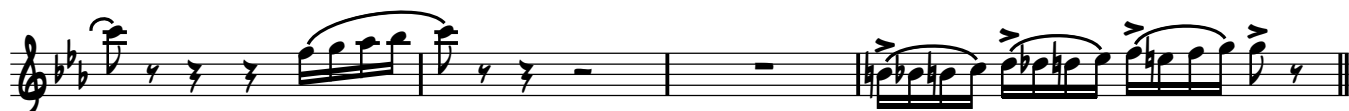


1ST BARITONE

MESTREECH WAERD ZO LANGZAAM AAN WAKKER

COMP. GÉ REINDERS
ARR. PETER KLEINE SCHAARS
PIETER KOSTER

Vivo ♩ = 172



36 *mp*

44 *mp*

54 SLOW ♩. = 76 VIVO ♩. = 172 SLOW ♩. = 76

VIVO ♩. = 172 SLOW ♩. = 76 VIVO ♩. = 172

63 *mf* *ff*

Detailed description: This page contains the musical score for the 1st Baritone part, measures 36 through 63. The music is written in treble clef with a key signature of two flats (B-flat and E-flat). Measures 36-43 are in 4/4 time, marked *mp* (mezzo-piano), and feature a melodic line with a long slur. Measures 44-53 are also in 4/4 time, marked *mp*, and consist of a continuous eighth-note pattern. Measures 54-62 are in 12/8 time, marked with tempo changes: SLOW (♩. = 76), VIVO (♩. = 172), SLOW (♩. = 76), VIVO (♩. = 172), SLOW (♩. = 76), and VIVO (♩. = 172). The dynamics range from *mf* (mezzo-forte) to *ff* (fortissimo). Measure 63 is in 4/4 time, marked *mf*, and features a melodic line with a long slur. The score ends with a double bar line.